

I RUOTE PNEUMATICHE,
NUCLEO IN POLIPROPILENE

GB PNEUMATIC WHEELS,
POLYPROPYLENE CENTRE

F ROUES PNEUMATIQUES,
CORPS EN POLYPROPYLENE

D LUFTBEREIFTE RÄDER,
POLYPROPYLENKERN

E RUEDAS NEUMATICAS,
NUCLEO DE POLIPROPILENO

P RODAS PNEUMÁTICAS,
NÚCLEO EM POLIPROPILENO



200

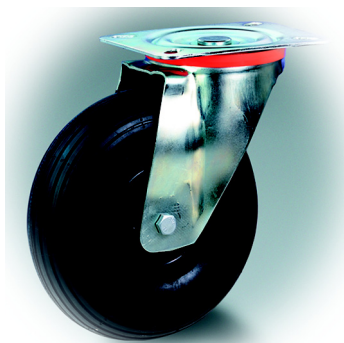


-20°C ÷ +60°C

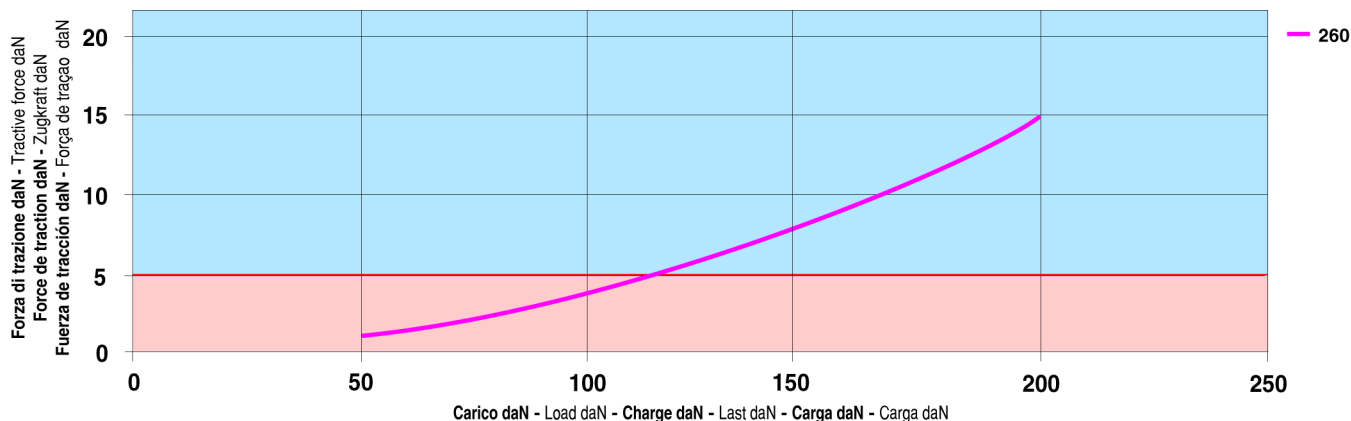
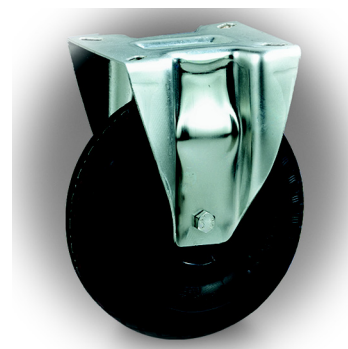


I	GB	F
<p>Caratteristiche</p> <p>Ruote con rivestimento costituito da pneumatico (rigato o scolpito) a due tele; pressione di esercizio: 2 bar; nucleo in polipropilene. Supporti leggeri (NL).</p> <p>Impieghi</p> <p>Idonea all'impiego in ambienti umidi e con presenza di agenti chimici di media aggressività; se ne sconsiglia l'utilizzo in presenza di solventi organici, clorurati, idrocarburi ed oli minerali.</p>	<p>Features</p> <p>Pneumatic tyred wheels with rib or country profile and 2 plies; working pressure: 2 bars; polypropylene centre. Standard duty brackets (NL).</p> <p>Uses</p> <p>Suitable for humid environments with medium-harsh chemicals; not suitable for applications where chlorinated or organic solvents, hydrocarbons and mineral oils are present.</p>	<p>Caractéristiques</p> <p>Roues avec bandage constitué par un pneu (rainuré ou sculpté) à double trame toilée; pression de service : 2 bars; corps en polypropylène. Montures legères (NL).</p> <p>Utilisations</p> <p>Peut être utilisée dans des milieux humides avec présence d'agents chimiques moyennement corrosifs ; il est conseillé de ne pas l'utiliser en présence de solvants organiques, chlorurés, d'hydrocarbures et d'huiles minérales.</p>





D	E	P
<p>Eigenschaften</p> <p>Luftreifen (Rillen- oder Stollenprofil) mit Doppelgewebe; Betriebsdruck: 2 bar; Polypropylenkern. Leichte Gehäuse (NL).</p>	<p>Característicàs</p> <p>Ruedas con bandaje formado por neumático (rayado o esculpido) con dos telas; presión de operación 2 bar; núcleo en poli-propileno. Soportes industriales (NL).</p>	<p>Característicàs</p> <p>Rodas con revestimento constituído por um pneu (raiado ou esculpido) com duas telas, pressão de trabalho de 2 bar; núcleo em polipropileno. Ferragem leve (NL).</p>
<p>Einsatz</p> <p>Für feuchte Umgebungen und Bereiche mit chemischen Substanzen mittlerer Aggressivität geeignet; vom Gebrauch in Umgebungen mit organischen Lösungsmitteln, Chloriden, Kohlenwasserstoffen und Mineralölen wird abgeraten.</p>	<p>Utilizaciòn</p> <p>Se puede utilizar en ambientes húmedos y ante agentes químicos de media agresividad; se desaconseja su utilización ante solventes orgánicos, clorurados, hidrocarburos y aceites minerales.</p>	<p>Utilização</p> <p>Pode ser utilizada em ambientes úmidos e na presença de agentes químicos de média agressividade; é desaconselhável a utilização na presença de solventes orgânicos, clorretados, hidrocarbonetos e óleos minerais.</p>



I RUOTE PNEUMATICHE,
NUCLEO IN POLIPROPILENE

GB PNEUMATIC WHEELS,
POLYPROPYLENE CENTRE

F ROUES PNEUMATIQUES,
CORPS EN POLYPROPYLENE

D LUFTBEREIFTE RÄDER,
POLYPROPYLENKERN

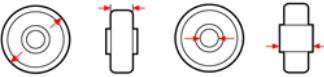





E RUEDAS NEUMATICAS,
NUCLEO DE POLIPROPILENO

P RODAS PNEUMÁTICAS,
NÚCLEO EM POLIPROPILENO

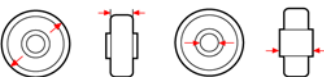





 **tellure Rôta**

82



										
260	85	20	74	200	 COD.					
260	85	20	74	200	0.91	821601	1.03	823601		
260	85	25	74	200	0.90	821602	1.00	823602		



										
260	85	20	74	200	 COD.					
260	85	20	74	200	0.96	822601	1.08	824601		
260	85	25	74	200	0.95	822602	1.05	824602		

I
GB
F
D
E
P

**RUOTE PNEUMATICHE,
SUPPORTI LEGGERI (NL)**

**PNEUMATIC WHEELS,
STANDARD DUTY BRACKETS (NL)**

**ROUES PNEUMATIQUES,
MONTURES LEGERES (NL)**

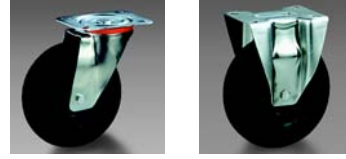
**LUFTBEREIFTE RÄDER,
LEICHTE GEHÄUSE (NL)**

**RUEDAS NEUMATICAS,
SOPORTES INDUSTRIALES (NL)**

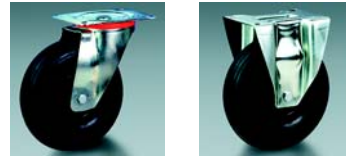
**RODAS PNEUMATICAS,
FERRAGEM LEVE (NL)**



82



260	85	300	200x160	160x120	14	86	200	2.83		COD.	826601	4.33		COD.	825601		
260	85	300	200x160	160x120	14	86	200	2.93		COD.	826701	4.43		COD.	825701		



260	85	300	200x160	160x120	14	86	200	2.89		COD.	826602	4.38		COD.	825602		
260	85	300	200x160	160x120	14	86	200	2.98		COD.	826702	4.48		COD.	825702		