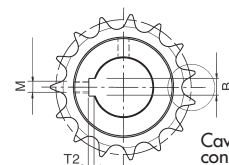
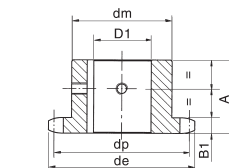


# PIGNONI SEMPLICI CON DENTI TEMPRATI AD INDUZIONE CON FORO + CAVA + FORI VITE

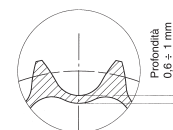
## 3/8" x 7/32" 06B-1

per catene a rulli secondo DIN 8187 ISO/R 606

z	d <sub>e</sub>	d <sub>p</sub>	d <sub>m</sub>	A	D <sub>1</sub>	z	d <sub>e</sub>	d <sub>p</sub>	d <sub>m</sub>	A	D <sub>1</sub>	z	d <sub>e</sub>	d <sub>p</sub>	d <sub>m</sub>	A	D <sub>1</sub>
13	43.5	39.80	28	25	12	18	58.3	54.85	43	28	14	23	73.7	69.95	52	28	15
					14						15						16
					15						16						18
					16						18						19
					18						19						20
					19						20						22
					20						22						24
14	46.5	42.80	31	25	12	19	61.6	57.87	45	28	15	24	76.7	72.97	54	28	18
					14						16						19
					15						18						20
					16						19						22
					18						20						24
					19						22						25
					20						24						30
					22						25						
					24												
15	49.5	45.81	34	25	14	20	64.3	60.89	46	28	15	25	79.7	76.00	57	28	18
					15						16						20
					16						18						22
					18						19						24
					19						20						25
					20						22						30
					22						24						
					24						25						
16	52.3	48.82	37	28	14	21	67.6	63.91	48	28	15	30	94.8	91.12	60	30	20
					15						16						22
					16						18						24
					18						19						25
					19						20						28
					20						22						30
					22						24						
					24						25						
17	55.5	51.83	40	28	14	22				28	15	30				30	20
					15						16						22
					16						18						24
					18						19						25
					19						20						28
					20						22						30
					22						24						
					24						25						



Cava in linea con dente



Denti temprati ad induzione HRC 45÷53

### PIGNONE mm

LARGHEZZA DENTE PIGNONE B<sub>1</sub> 5.3

### CATENA mm

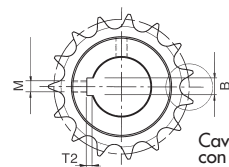
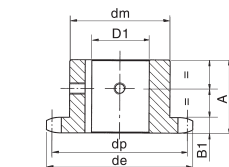
PASSO 9.525

LARGHEZZA INTERNA 5.72

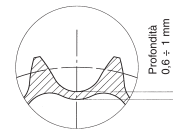
RULLO - ø 6.35

MATERIALE: C 45 UNI 7845

z	d <sub>e</sub>	d <sub>p</sub>	d <sub>m</sub>	A	D <sub>1</sub>	z	d <sub>e</sub>	d <sub>p</sub>	d <sub>m</sub>	A	D <sub>1</sub>	z	d <sub>e</sub>	d <sub>p</sub>	d <sub>m</sub>	A	D <sub>1</sub>
12	53.9	49.07	33	28	12	17	74	69.11	52	28	15	23	98.1	93.27	70	28	20
					14						16						22
					15						18						25
					16						19						28
					18						20						30
					19						22						32
					20						24						35
					22						25						38
					24						28						
13	57.9	53.06	37	28	12	18	77.8	73.14	56	28	16	24	102.1	97.29	70	28	20
					14						18						22
					15						19						24
					16						20						25
					18						22						28
					19						24						30
					20						25						32
					22						28						35
					24						30						38
14	61.6	57.07	41	28	14	19	82	77.16	60	28	19	25	105.8	101.33	70	28	20
					15						20						22
					16						22						24
					18						24						25
					19						25						28
					20						28						30
					22						30						32
					24						32						35
					25						35						38
15	65.9	61.09	45	28	14	20	85.8	81.19	64	28	19	27	114	109.4	70	30	22
					15						20						25
					16						22						28
					18						24						30
					19						25						32
					20						28						35
					22						30						38
					24						32						
					25						35						
16	69.5	65.1	50	28	15	21	90.1	85.22	68	28	19	30	126.3	121.5	80	30	25
					16						20						28
					18						22						30
					19						24						32
					20						25						35
					22						28						38
					24						30						
					25						32						
					28						35						
					30						38						



Cava in linea con dente



Denti temprati ad induzione HRC 45÷53

### PIGNONE mm

LARGHEZZA DENTE PIGNONE B<sub>1</sub> 7.2

### CATENA mm

PASSO 12.7

LARGHEZZA INTERNA 7.75

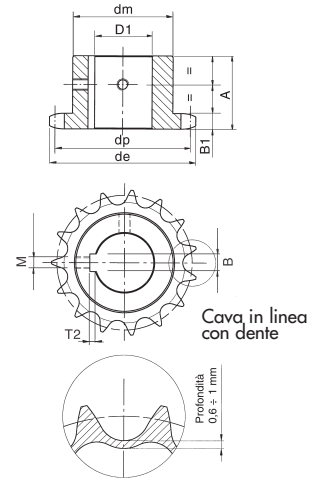
RULLO - ø 8.51

MATERIALE: C 45 UNI 7845

# PIGNONI SEMPLICI CON DENTI TEMPRATI AD INDUZIONE CON FORO + CAVA + FORI VITE

## 5/8" x 3/8" 10B-1

per catene a rulli secondo DIN 8187 ISO/R 606



Denti temprati ad induzione HRC 45÷53

### PIGNONE mm

LARGHEZZA DENTE PIGNONE B<sub>1</sub> 9.1

### CATENA mm

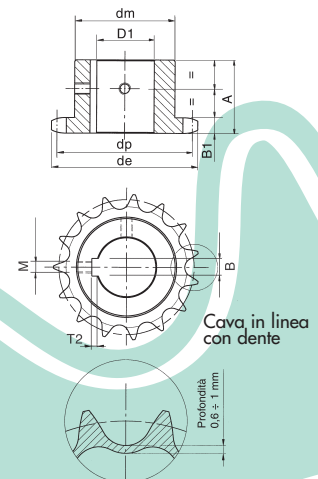
PASSO 15.875  
LARGHEZZA INTERNA 9.65  
RULLO - ø 10.16

MATERIALE: C 45 UNI 7845

z	d <sub>e</sub>	d <sub>p</sub>	d <sub>m</sub>	A	D <sub>1</sub>	z	d <sub>e</sub>	d <sub>p</sub>	d <sub>m</sub>	A	D <sub>1</sub>	z	d <sub>e</sub>	d <sub>p</sub>	d <sub>m</sub>	A	D <sub>1</sub>
13	73.2	66.32	47	30	16	18	98.3	91.42	70	30	20	23	123.4	116.58	80	30	20
					19						22						22
					20						24						24
					22						25						25
					24						28						28
					25						30						30
					28						32						32
					30						35						35
											38						38
											40						40
14	78.2	71.34	52	30	16	19	103.3	96.45	70	30	20	24	128.5	121.62	80	30	20
					19						22						22
					20						24						24
					22						25						25
					24						28						28
					25						30						30
					28						32						32
					30						35						35
											38						38
											40						40
15	83.2	76.36	57	30	19	20	108.4	101.49	75	30	20	25	133.5	126.66	80	30	22
					20						22						24
					22						24						25
					24						25						28
					25						28						30
					28						30						32
					30						32						35
					32						35						38
					35						40						42
16	88	81.37	60	30	20	21	113.4	106.52	75	30	20	22					22
					22						24						24
					24						25						25
					25						28						28
					28						30						30
					30						32						32
					32						35						35
					35						40						40
17	93.2	86.39	60	30	20	22					22						22
					22						24						24
					24						25						25
					25						28						28
					28						30						30
					30						32						32
					32						35						35
					35						40						40

## 3/4" x 7/16" 12B-1

per catene a rulli secondo DIN 8187 ISO/R 606



Denti temprati ad induzione HRC 45÷53

### PIGNONE mm

LARGHEZZA DENTE PIGNONE B<sub>1</sub> 11.1

### CATENA mm

PASSO 19.05  
LARGHEZZA INTERNA 11.68  
RULLO - ø 12.07

MATERIALE: C 45 UNI 7845

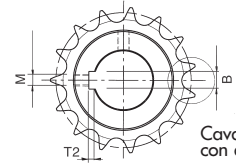
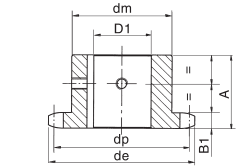
z	d <sub>e</sub>	d <sub>p</sub>	d <sub>m</sub>	A	D <sub>1</sub>	z	d <sub>e</sub>	d <sub>p</sub>	d <sub>m</sub>	A	D <sub>1</sub>	z	d <sub>e</sub>	d <sub>p</sub>	d <sub>m</sub>	A	D <sub>1</sub>
12	81.8	73.6	52	35	20	17	111.2	103.67	80	35	22	23	147.4	139.90	90	40	28
					22						25						30
					24						28						32
					25						30						35
					28						32						38
					30						35						40
											38						42
											40						45
											42						48
											45						50
13	87.1	79.60	58	35	20	18	118.0	109.71	80	35	22	24	154.1	145.94	90	40	28
					22						25						30
					24						28						32
					25						30						35
					28						32						38
					30						35						40
					32						38						42
					35						40						45
14	93.8	85.61	64	35	20	19	123.3	115.75	80	35	25	25	159.5	152.00	90	40	28
					22						28						30
					24						30						32
					25						32						35
					28						35						38
					30						38						40
					32						40						42
					35						42						45
15	99.2	91.63	70	35	20	20	129.7	121.78	80	35	25	28					28
					22						30						30
					24						32						32
					25						35						35
					28						38						38
					30						40						40
					32						42						42
					35						45						45
16	105.5	97.65	75	35	20	21	135.4	127.82	90	40	28	30					28
					22						32						30
					25						35						32
					28						38						35
					30						40						38
					32						42						40
					35						45						42
					38						48						45
					40						50						48

# PIGNONI SEMPLICI CON DENTI TEMPRATI AD INDUZIONE CON FORO + CAVA + FORI VITE

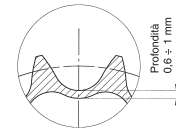
z	d <sub>e</sub>	d <sub>p</sub>	d <sub>m</sub>	A	D <sub>1</sub>	z	d <sub>e</sub>	d <sub>p</sub>	d <sub>m</sub>	A	D <sub>1</sub>	z	d <sub>e</sub>	d <sub>p</sub>	d <sub>m</sub>	A	D <sub>1</sub>
12	109.71	98.14	69	40	25	16	141.0	130.20	100	45	30	20	173.2	162.38	100	45	30
					28						32						32
					30						35						35
					32						38						38
					35						40						40
					38						42						42
					40						45						45
					42						48						48
					45						50						50
13	117.2	106.14	78	40	25	17	149.4	138.22	100	45	30	21	181.6	170.43	110	50	30
					28						32						32
					30						35						35
					32						38						38
					35						40						40
					38						42						42
					40						45						45
					42						48						48
					45						50						50
14	125.7	114.15	84	40	25	18	157.0	146.28	100	45	30	23	198.1	186.1	110	50	30
					28						32						32
					30						35						35
					32						38						38
					35						40						40
					38						42						42
					40						45						45
					42						48						48
					45						50						50
15	133.3	122.17	92	40	28	19	165.5	154.33	100	45	30	25	214.2	202.66	110	50	30
					30						32						32
					32						35						35
					35						38						38
					38						40						40
					40						42						42
					42						45						45
					45						48						48
					48						50						50

1" x 17.02 16B-1

per catene a rulli secondo DIN 8187 ISO/R 606



Cava in linea con dente



Denti temprati ad induzione HRC 45-53

**PIGNONE** \_\_\_\_\_ mm

LARGHEZZA DENTE PIGNONE B<sub>1</sub> 16.2

**CATENA** \_\_\_\_\_ mm

PASSO 25.4

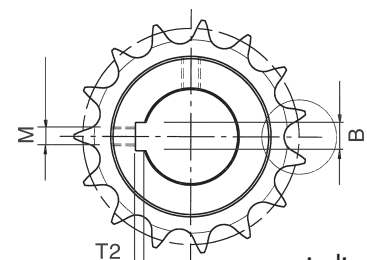
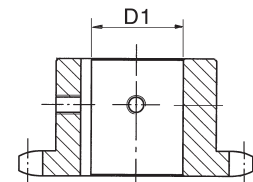
LARGHEZZA INTERNA 17.02

RULLO - Ø 15.88

MATERIALE: C 45 UNI 7845

## CAVE DIN 6885 - JS9

D <sub>1</sub> Foro	B Larghezza	T2 Profondità	M Fori vite
Ø 12 H7 +0.018 -0	4 H9 +0.030 -0	1,8 +0.10 -0	M4
Ø 14 H7 +0.018 -0	5 H9 +0.030 -0	2,3 +0.10 -0	M4
Ø 15 H7 +0.018 -0	5 H9 +0.030 -0	2,3 +0.10 -0	M4
Ø 16 H7 +0.018 -0	5 H9 +0.030 -0	2,3 +0.10 -0	M4
Ø 18 H7 +0.018 -0	6 H9 +0.030 -0	2,8 +0.10 -0	M5
Ø 19 H7 +0.021 -0	6 H9 +0.030 -0	2,8 +0.10 -0	M5
Ø 20 H7 +0.021 -0	6 H9 +0.030 -0	2,8 +0.10 -0	M5
Ø 22 H7 +0.021 -0	6 H9 +0.030 -0	2,8 +0.10 -0	M5
Ø 24 H7 +0.021 -0	8 H9 +0.036 -0	3,3 +0.20 -0	M6
Ø 25 H7 +0.021 -0	8 H9 +0.036 -0	3,3 +0.20 -0	M6
Ø 28 H7 +0.021 -0	8 H9 +0.036 -0	3,3 +0.20 -0	M6
Ø 30 H7 +0.021 -0	8 H9 +0.036 -0	3,3 +0.20 -0	M6
Ø 32 H7 +0.025 -0	10 H9 +0.036 -0	3,3 +0.20 -0	M8
Ø 35 H7 +0.025 -0	10 H9 +0.036 -0	3,3 +0.20 -0	M8
Ø 38 H7 +0.025 -0	10 H9 +0.036 -0	3,3 +0.20 -0	M8
Ø 40 H7 +0.025 -0	12 H9 +0.043 -0	3,3 +0.20 -0	M10
Ø 42 H7 +0.025 -0	12 H9 +0.043 -0	3,3 +0.20 -0	M10
Ø 45 H7 +0.025 -0	14 H9 +0.043 -0	3,8 +0.20 -0	M12
Ø 48 H7 +0.025 -0	14 H9 +0.043 -0	3,8 +0.20 -0	M12
Ø 50 H7 +0.025 -0	14 H9 +0.043 -0	3,8 +0.20 -0	M12



cava in linea con dente